

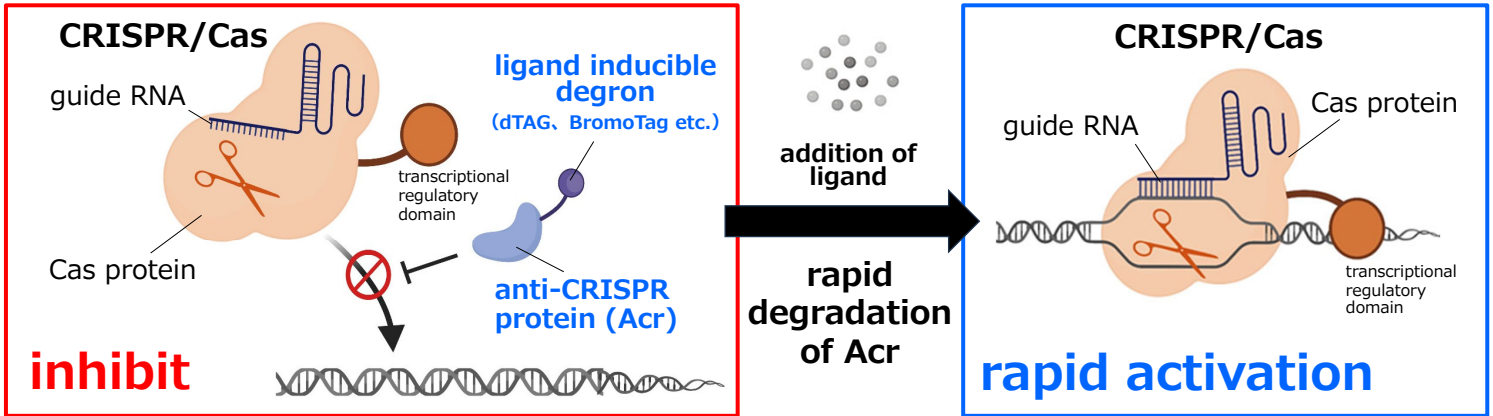
RAPID-CRISPR

Rapid activation of genome-editing enzyme

Concept

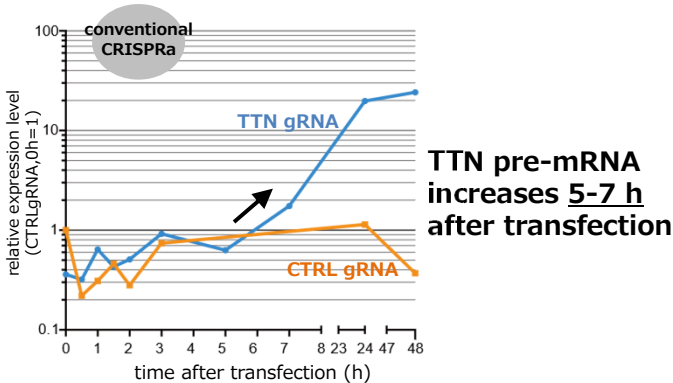
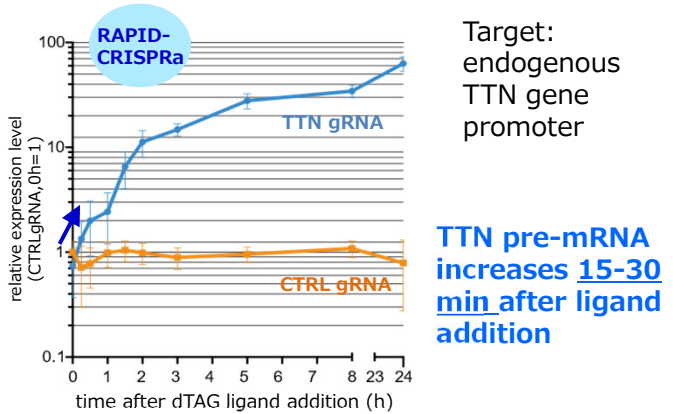
RAPID: Regulation by Anti-CRISPR Proteins via Inducible Degradation

We combined anti-CRISPR proteins and ligand-inducible degenon to rapidly activate the CRISPR/Cas system.



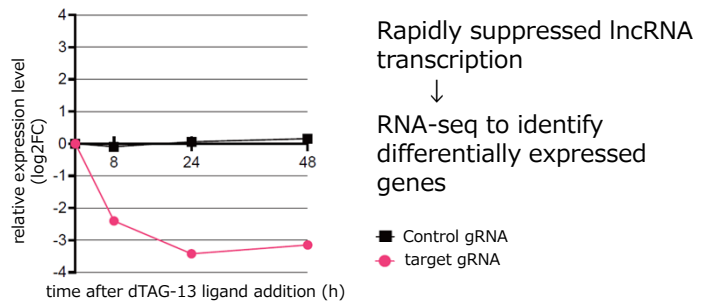
Experimental Data: How RAPID-CRISPR could be used?

RAPID-CRISPR_a (gene activation)

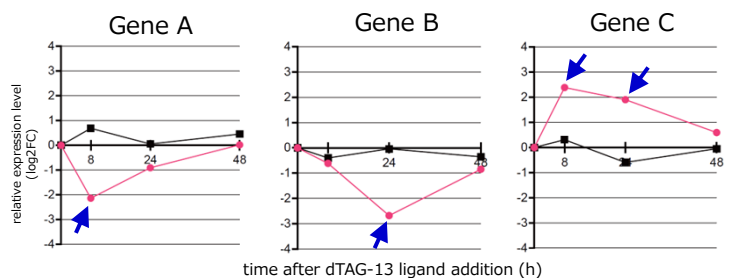


RAPID-CRISPR_i (gene interference)

Target: tumor associated lncRNA
Cells: K-562



Identified some variable genes which may be associated with the function of this lncRNA.



Patent

PCT/JP2024/034873 "Methods for controlling the activity of CRISPR/Cas and use of CRISPR/Cas"



Yuta Suzuki, Senior Associate

Technology Licensing Office, Tokyo Metropolitan Institute of Medical Science

<https://www.igakuken.or.jp/english/center/tlo/tlo.html> e-mail: chizai@igakuken.or.jp