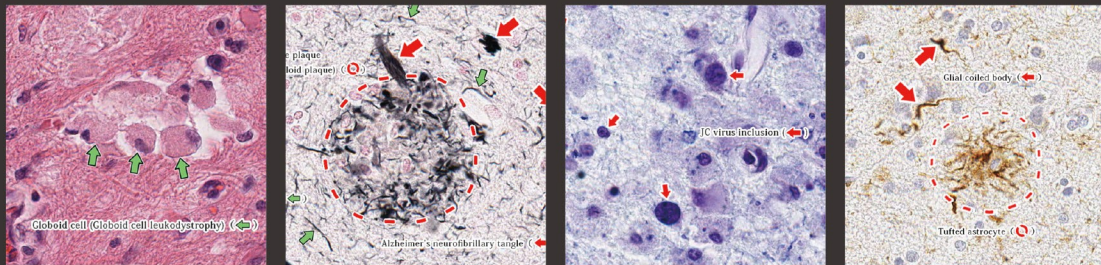


e-Learning
EBA&N
Essential Brain Anatomy & Neuropathology

E-learning content and whole slide image (WSI) database of neuropathologic human brain specimens



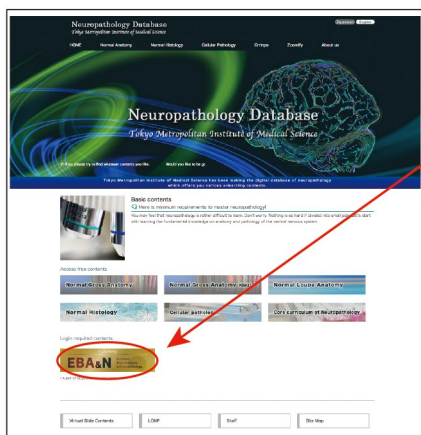
The Laboratory of Neuropathology at TMIMS has more than 5,000 human brain specimens of neurological diseases, as well as high resolution WSI (whole slide images) organized into a library of neuropathological disorders. Our Neuropathology Database and web contents can be utilized for various collaborative research and education / training activities.

Opportunities for collaboration and development

- We can provide access to a **large number of specimens** from a wide variety of neurological diseases.
- Our **WSI library** will be useful in collaborative development of automated methods of diagnosing neurological diseases.
- Our **Neuropathology Database** and web contents are available for E-learning, collaborative research, and training for neuropathological disease diagnoses.

E-learning and EBA&N

- Our **WSI library** can be accessed on the internet at the EBA&N site. This site is useful for remote **E-learning of neuropathology** and for analysis of neuropathological conditions. Web contents are also available on a shared data cloud for collaborative research.
- Subscribers are provided with an individual Log-In account and can access web contents without limitation on PC or tablet device browsers.



Click here!



A free trial Log-In account for a limited time only
(until 31st October 2017)

ID : biojapan
PW : 2017

Contact us if any further interest !!

We welcome subscribers and collaborators. In particular, we seek collaborations to develop automated systems to characterize and diagnose neurologic disease pathologies.

Technology Licensing Office, Tokyo Metropolitan Institute of Medical Science,
Yasuko Makino, Ph.D., E-Mail: chizai@igakuken.or.jp