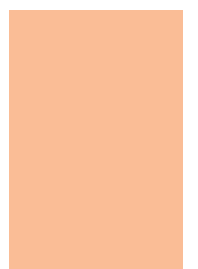
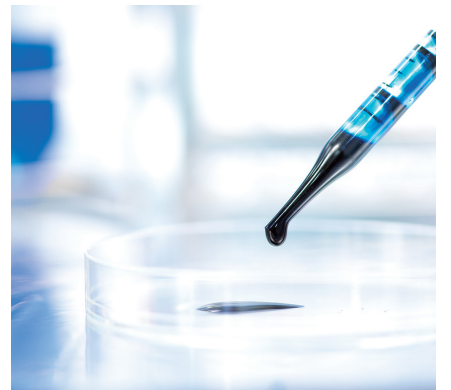
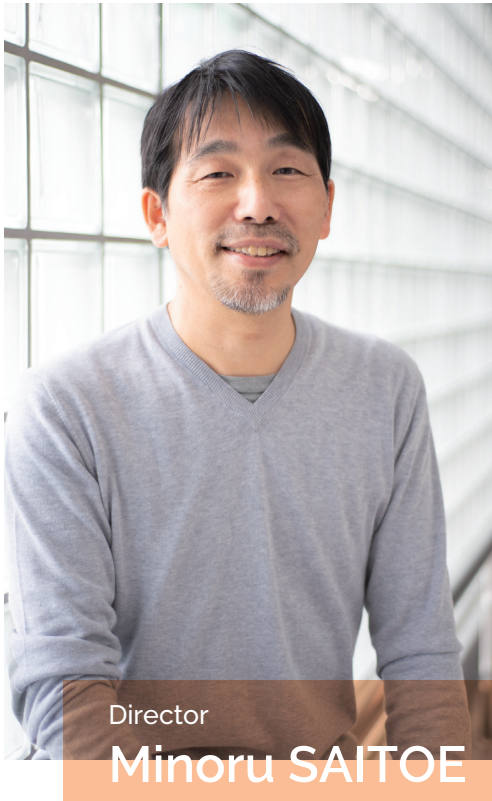




Research Supports





Director

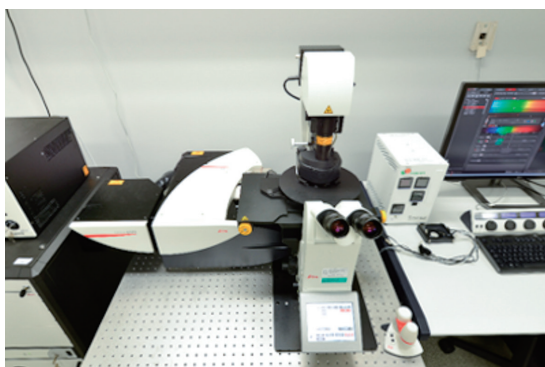
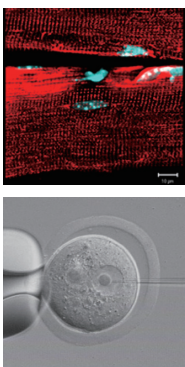
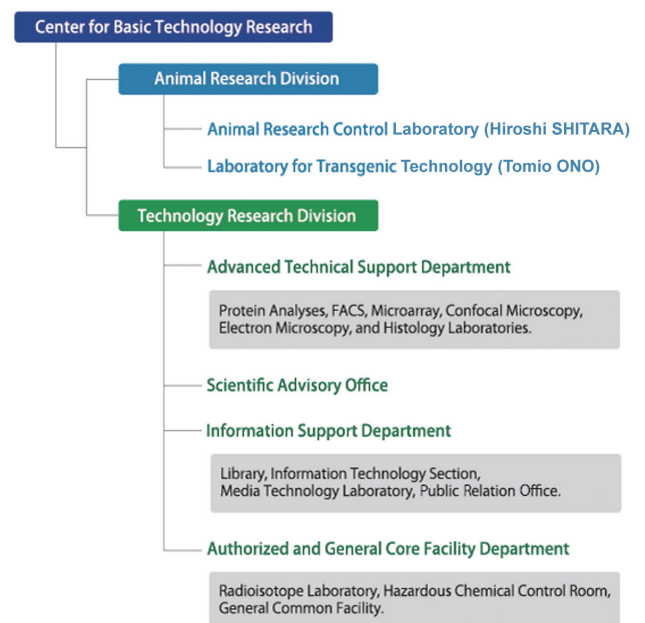
Minoru SAITOE

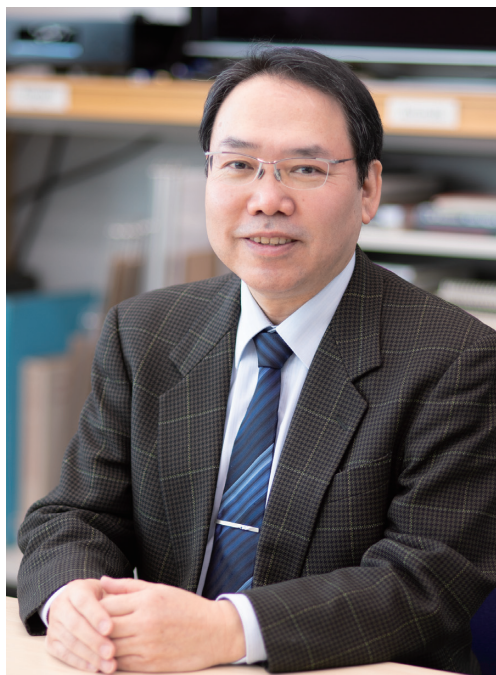
Basic Technology Research

Laboratory HP: <https://www.igakuken.or.jp/english/center/basic/basictech.html>

The Basic Technology Research Center provides resources to assist scientists to conduct their research efficiently. We provide state-of-the-art technologies required for biomedical and life science research and maintain various facilities used by researchers.

1. The Animal Research Division maintains our animal facilities and provides care and welfare for the animals used in research. This division assists researchers in generating transgenic and knock-out animals and maintains sperm and eggs of various mutant animal lines.
2. The Advanced Technical Support Department provides state-of-the-art technology for our scientists including facilities for protein analyses, FACS, microarrays, confocal and electron microscopy, histology and other technologies.
3. The Information Support Department consists of the library, the information technology section, the media technology laboratory, and the public relations office. It assists researchers in searching for references and information, deals with the media and public relations, and provides support for our computer systems.
4. The Authorized and General Core Facility Department consists of the radioisotope laboratory, the hazardous chemical control room, and the general common facility. It provides researchers with various special and common facilities and maintains safety standards for accident-free daily operation of the institute.





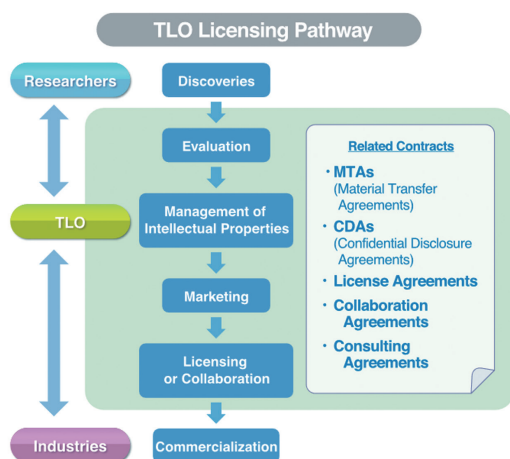
General Manager
Kazumasa AOKI

Technology Licensing Office

TLO HP: <https://www.igakuken.or.jp/english/center/tlo/tlo.html>

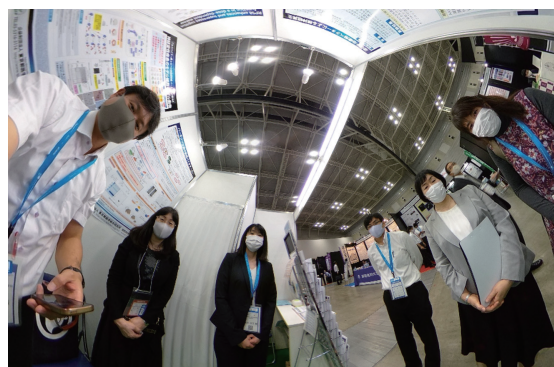
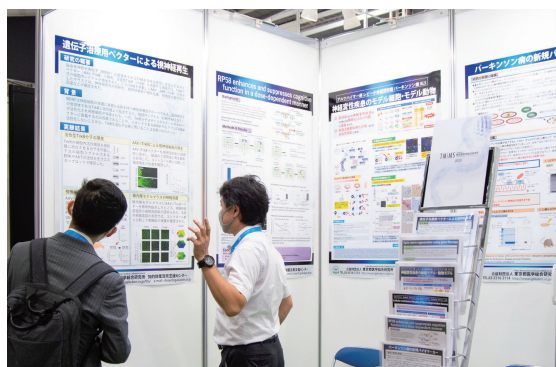
Who we are

- The Technology Licensing Office (TLO) facilitates the conversion of scientific discoveries to innovative technologies with the ultimate goal of improving public health and welfare.
- We evaluate basic research findings (seeds) as intellectual property assets, and license promising candidates to industries for development as medicines, diagnostics, medical devices, foods, cosmetics and research tools.



What we do

- We manage intellectual properties from our institute including patents, copyrights and materials in order to develop them for commercialization.
- To promote technology transfer, we introduce seeds and intellectual properties with potential commercial value to pharmaceutical, medical device, and startup companies.
- We attend business meetings such as the BIO international convention in the US, BIO-EUROPE, and BioJapan, to develop Public Private Partnership opportunities between industries and our institute.
- We support collaborative research projects with industries by arranging Joint Research Agreements, Material Transfer Agreements (MTA), and other contracts to protect and develop a wide range of research discoveries.





Director
Takayuki HARADA

Medical Research Cooperation

Laboratory HP: <https://www.igakuken.or.jp/english/center/tr/tr.html>

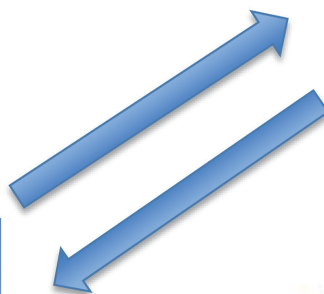
Strengthening Medical Research by Bringing Research Institutes and Hospitals Together
- From bench to bed and back again -

We facilitate collaboration between basic scientists at research institutes and medical doctors at hospitals. We have a supporting budget of 500,000 yen for collaborative clinical studies with medical doctors at Tokyo Metropolitan Hospitals.

We manage ethical issues related to human specimens and we provide specialized support for bringing knowledge and findings from basic scientific research to development of new therapy in humans.



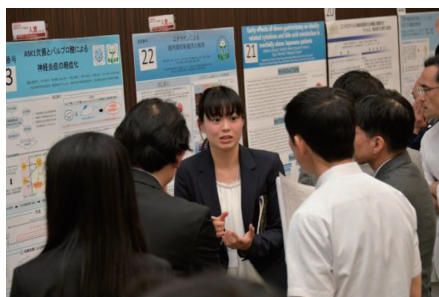
Tokyo Metropolitan Institute of Medical Science



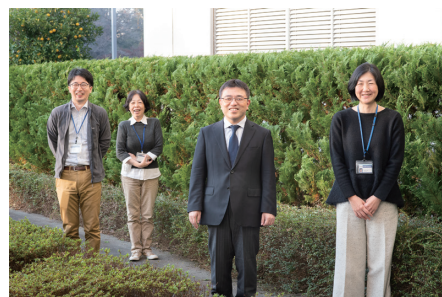
7,000 beds of Tokyo Metropolitan Hospitals



Conference with researchers and medical doctors



A young scientist discussing with medical researchers and medical doctors in conference





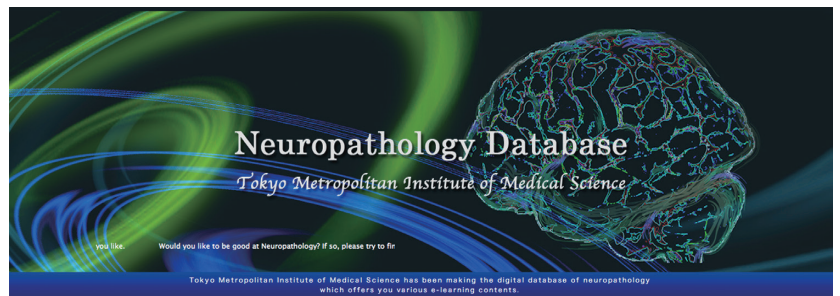
Neuropathology

Laboratory HP: https://pathologycenter.jp/english/en_index.html

Translational Research using human materials and Management of Database for Essential Brain Anatomy & Neuropathology

Staff

Erika SEKI	Nobuko UEKI	Keiko AKAMATSU
Rika KOJIMA	Tomoko YAGI	Hiromi EGUCHI
Kazunari SEKIYAMA	Tsunemi YAMANISHI	Yoshitomo UMITSU



The Laboratory of Neuropathology has more than 5,000 sets of human autopsied brain slides with a wide variety of human neurological diseases. In recent years, we have been scanning

these slides with virtual slide instruments. Using this digital data and its derivatives, we are constructing a digital neuropathology library.

The microscope will be replaced by digital pathology !

